

# Riesling

## *Ranch Style*

1464 Square Feet  
3 Bedroom 2 Bath



Some features shown will be at an additional cost.

Inquire about our three distinctive exterior design options.

### *Standard Features*

- \*Open Concept Floorplan
- \*Walk In Master Closet
- \*Main Floor Laundry Room
- \*Box Bay in Secondary Bedrooms

### *Available at these Communities*

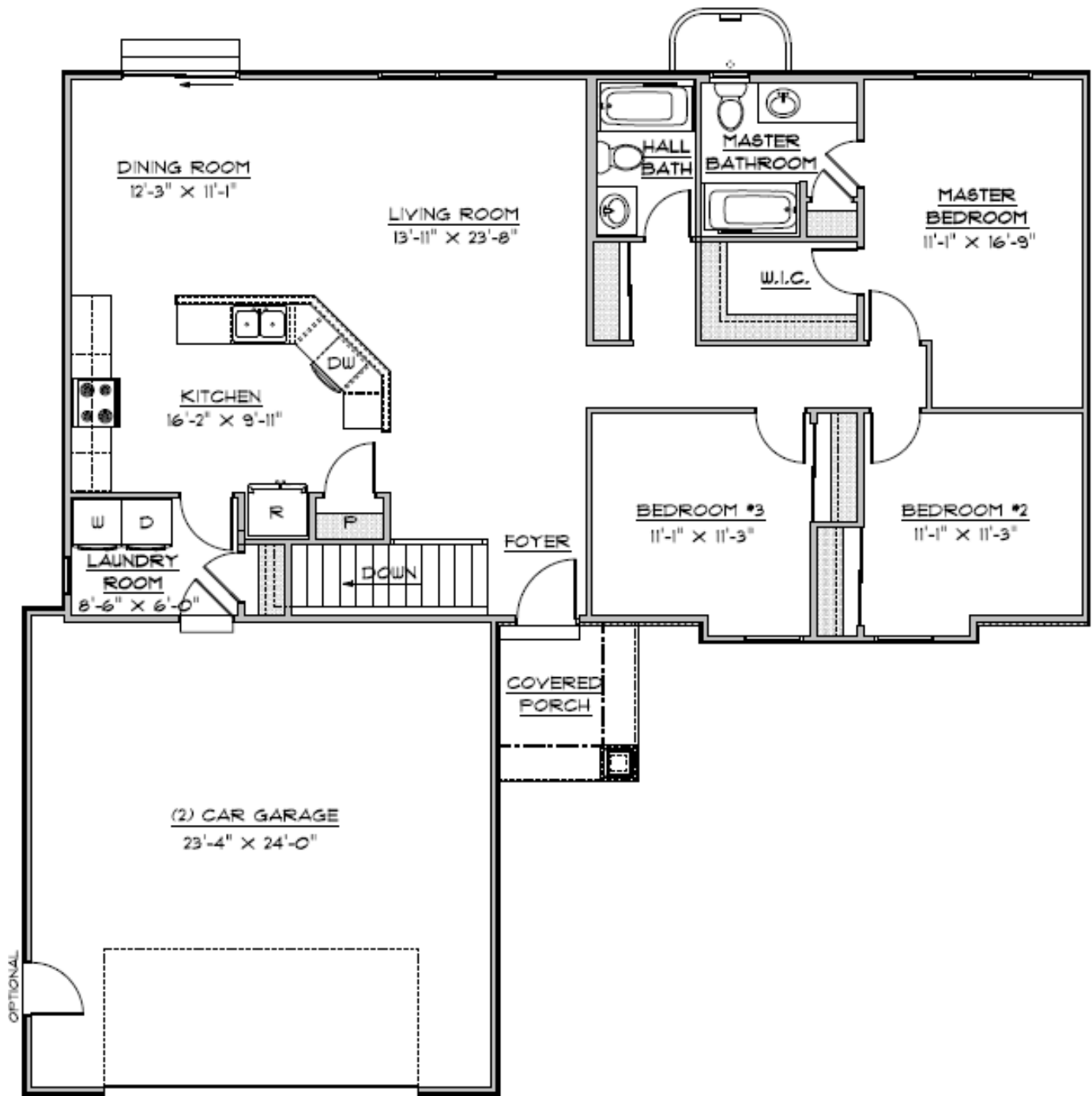
- \*Stone Crossing
- \*Manors of Magnolia
- \*Gettysburg Commons
- \*Whiskey Creek
- \*The Mills



## CANNON BUILDERS

Sales Office: 211 Creekwood Blvd Troy, MO. 63379 636-775-1911  
Business Office: 193 N. Lincoln Dr Troy, MO. 63379 636-462-8277

# Riesling



CANNON BUILDERS